

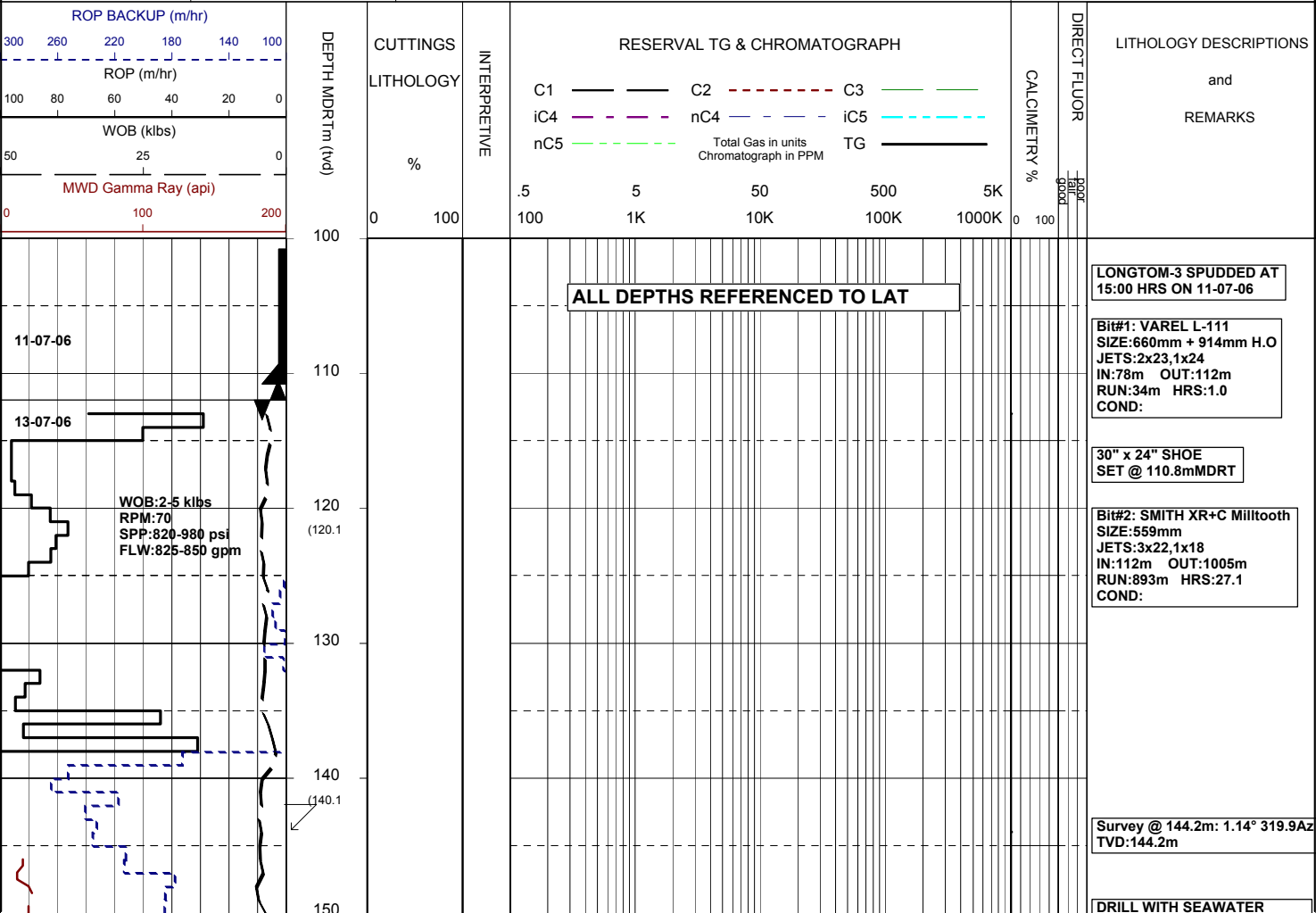


MASTERLOG LONGTOM-3

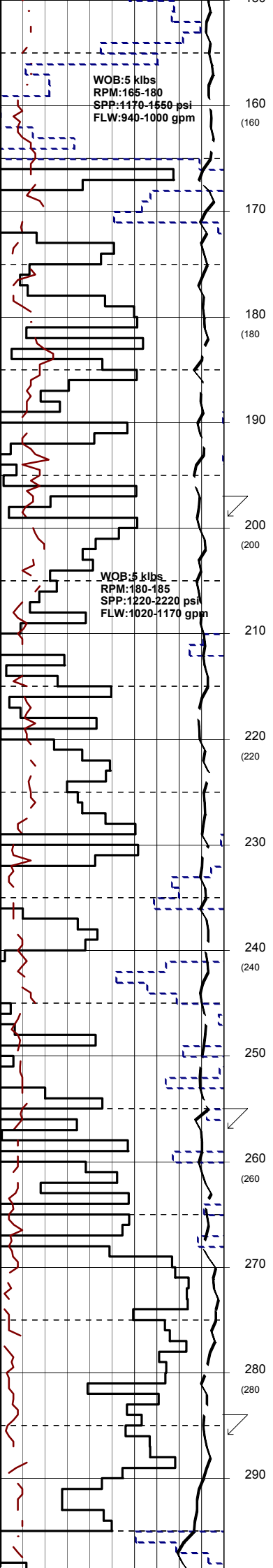


GENERAL	POSITION	HOLE / CASING INFO	DATE / DEPTH	ENGINEERS
Country : AUSTRALIA	Latitude : 38°05'34.774"S	914mm(36") hole to: 112.0m	Spud Date : 11-07-2006	T. N. KYAW
Permit : VIC/P54	Longitude : 148°18'41.479"E	559mm(22") hole to: 1005m	Total Depth Date : XX-09-2006	F. MAKHAD
Field : LONGTOM	UTM Co-ord X (m E): 615005	241mm(9 1/2") hole to: m	Total Depth (mMDRT): m	A. DUNN
Basin : GIPPSLAND	UTM Co-ord Y (m N): 5783055	762mm(30") Cond. to: 110.8m	True Vertical Depth (mTVDSS): m	D. ADDERLEY
Well Type : APPRAISAL	RT to MSL (m): 21.5	406mm(16") Csg. to: 995.3m	Log Scale : 1/ 500	
Rig: OCEAN PATRIOT	RT to Sea Bed (m): 78.2		Final Status : ?	

ABBREVIATIONS		LITHOLOGY LEGEND				ENGINEERING LEGEND	
MW Mud Weight	WOB Weight on Bit (klbs)	Claystone	Marl	Lithic Fragment	Cement	Shoe	DOLOMITE
FV Funnel Viscosity	RPM Rotations Per Min	Siltstone	Clay, Limestone	Foraminifera	Glauconite	Deviation survey	FIT
PV Plastic Viscosity	FLW Flow Rate (gpm)	Shale	Limestone	Fossils	Pyrite	DST	Mud loss
YP Yield Point	SPP Pump Pressure (psi)	Fine SST	Dolomite	Bryozoa	Iron Minerals	TEST Test	Mud gain
Gel Gel Strength	RR Re-Run Bit	Medium SST	Coal	Sponges	Mica	Sidewall Core	Core
WL Water Loss	TG Trip Gas	Coarse SST	Arg. SST	Brachiopoda	Carb Fragments		
KCl Potassium Chloride	CG Connection Gas						
Cl Chlorides	BG Background Gas						
Incl Inclination	DGP Drilled Gas Peak						
Az Azimuth	MM Mud Motor						



AND HI-VIS SWEEPS
RETURNS TO THE SEAFLOOR.



WOB:5 klbs
RPM:165-180
SPP:1170-1650 psi
FLW:940-1000 gpm

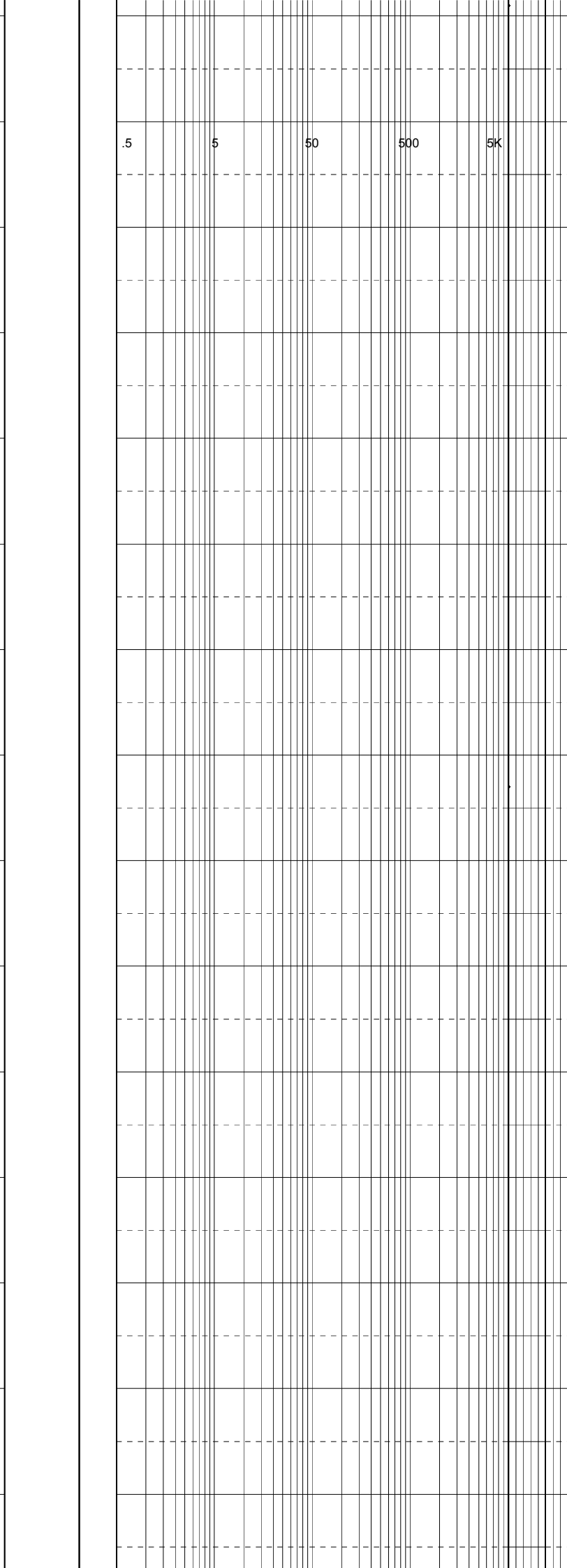
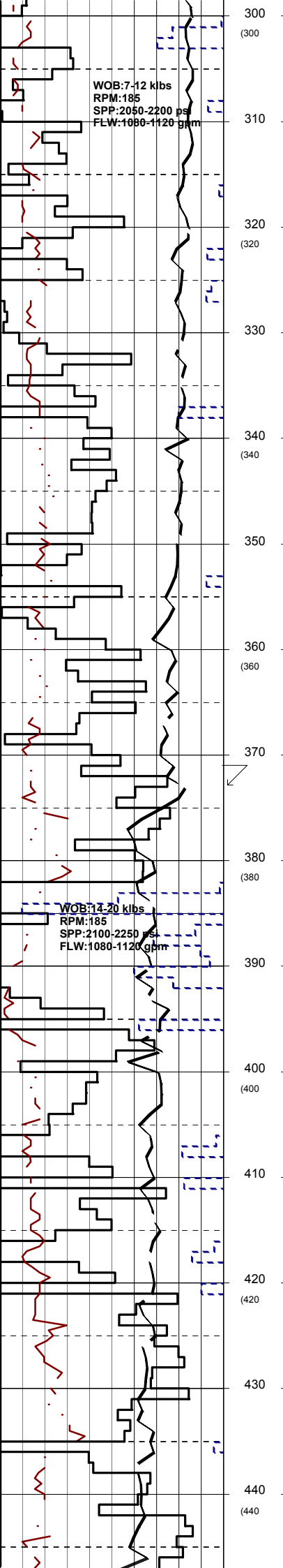
WOB:5 klbs
RPM:180-185
SPP:1220-2220 psi
FLW:1020-1170 gpm

Survey @ 199.1m: 1.01° 317.8Az
TVD:199.1m

DRILL WITH SEAWATER
AND HI-VIS SWEEPS
RETURNS TO THE SEAFLOOR.

Survey @ 256.9m: 1.02° 314.1Az
TVD:256.9m

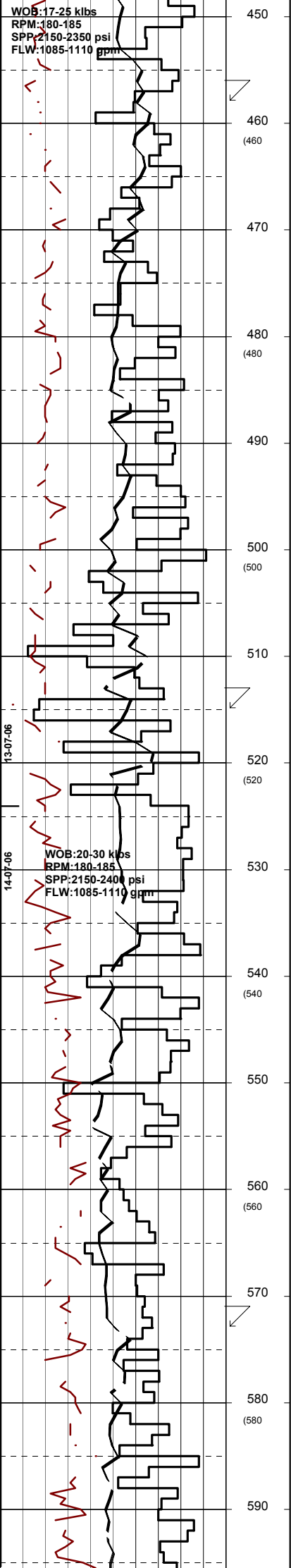
Survey @ 285.5m: 0.77° 322.6Az
TVD:285.5m



DRILL WITH SEAWATER
AND HI-VIS SWEEPS
RETURNS TO THE SEAFLOOR.

Survey @ 373.3m: 0.37° 298.4Az
TVD: 373.3m

DRILL WITH SEAWATER
AND HI-VIS SWEEPS
RETURNS TO THE SEAFLOOR.



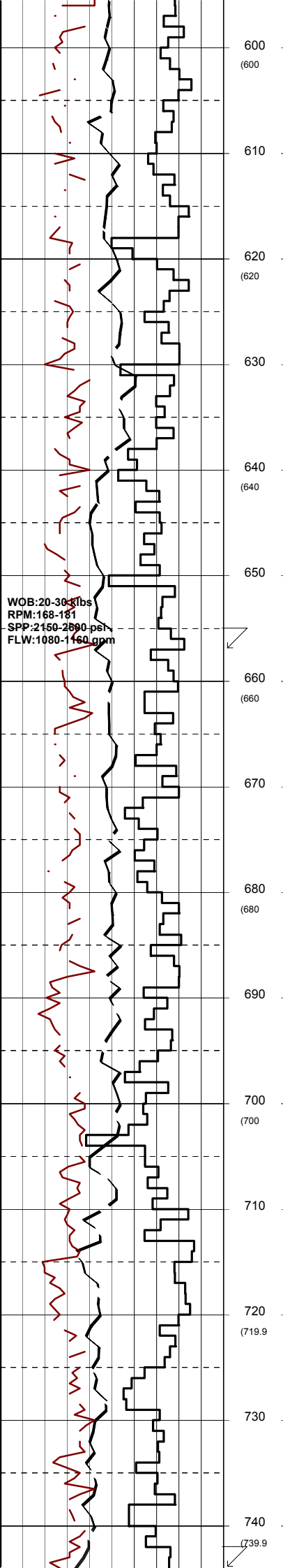
.5 5 50 500 5K

Survey @ 457.6m: 0.63° 340.7Az
TVD: 457.6m

Survey @ 514.7m: 0.25° 238.8Az
TVD: 514.6m

DRILL WITH SEAWATER
AND HI-VIS SWEEPS
RETURNS TO THE SEAFLOOR.

Survey @ 573.4m: 0.44° 72.2Az
TVD: 573.3m



600
(600)

610

620
(620)

630

640
(640)

650

660
(660)

670

680
(680)

690

700
(700)

710

720
(719.9)

730

740
(739.9)

.5 5 50 500 5K

**DRILL WITH SEAWATER
 AND HI-VIS SWEEPS
 RETURNS TO THE SEAFLOOR.**

Survey @ 657.5m: 0.63° 5.6Az
 TVD: 657.4m

Survey @ 744.2m: 1.18° 5.2Az

TVD:744.1m

DRILL WITH SEAWATER AND HI-VIS SWEEPS RETURNS TO THE SEAFLOOR.

.5 5 50 500 5K

WOB:22-33 klbs
RPM:157-182
SPP:2350-2580 psi
FLW:1120-1145 gpm

750
760 (759.9)
770
780 (779.9)
790
800 (799.9)
810
820 (819.9)
830
840 (839.9)
850
860 (859.9)
870
880 (879.9)
890

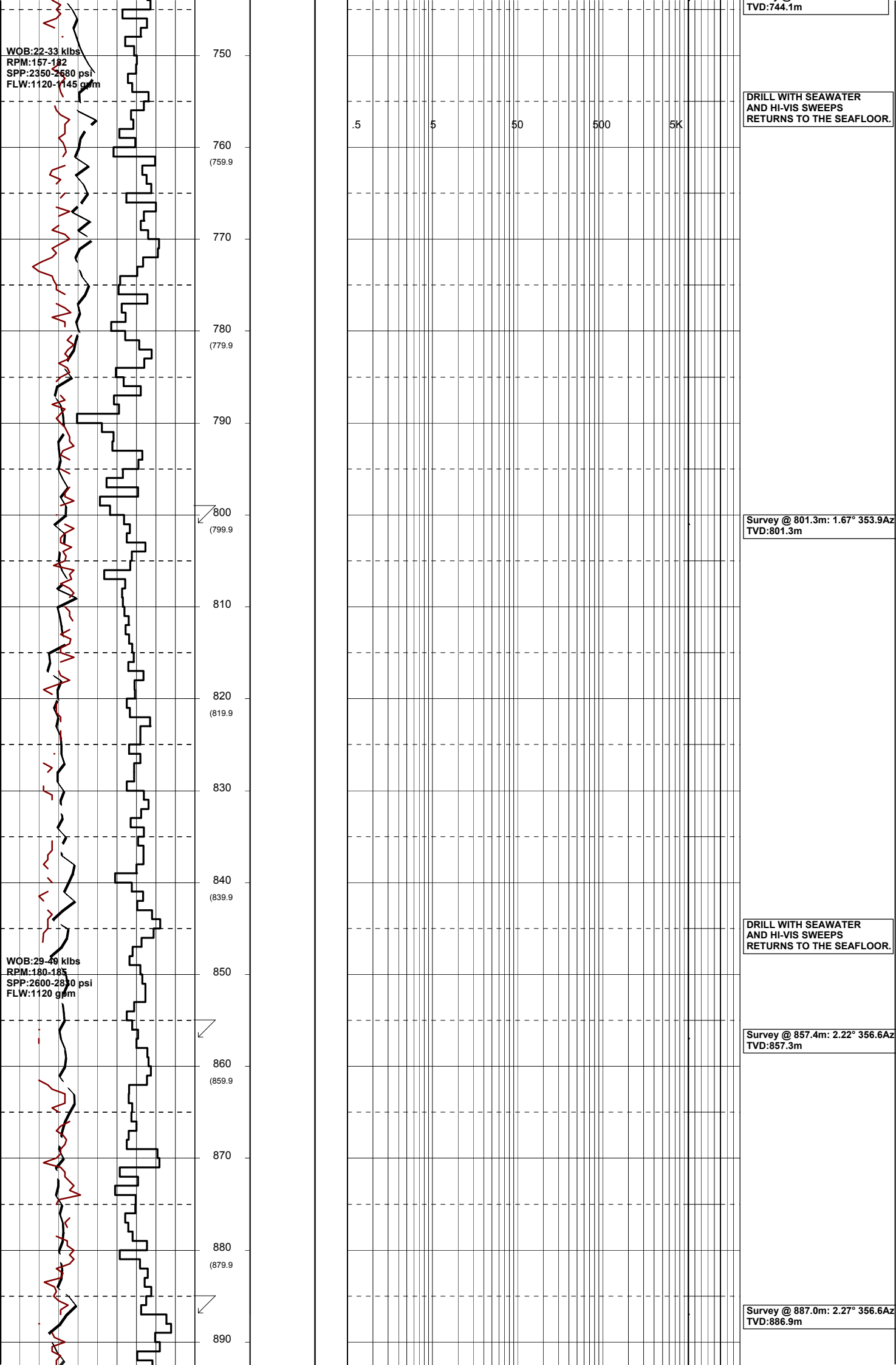
Survey @ 801.3m: 1.67° 353.9Az
TVD:801.3m

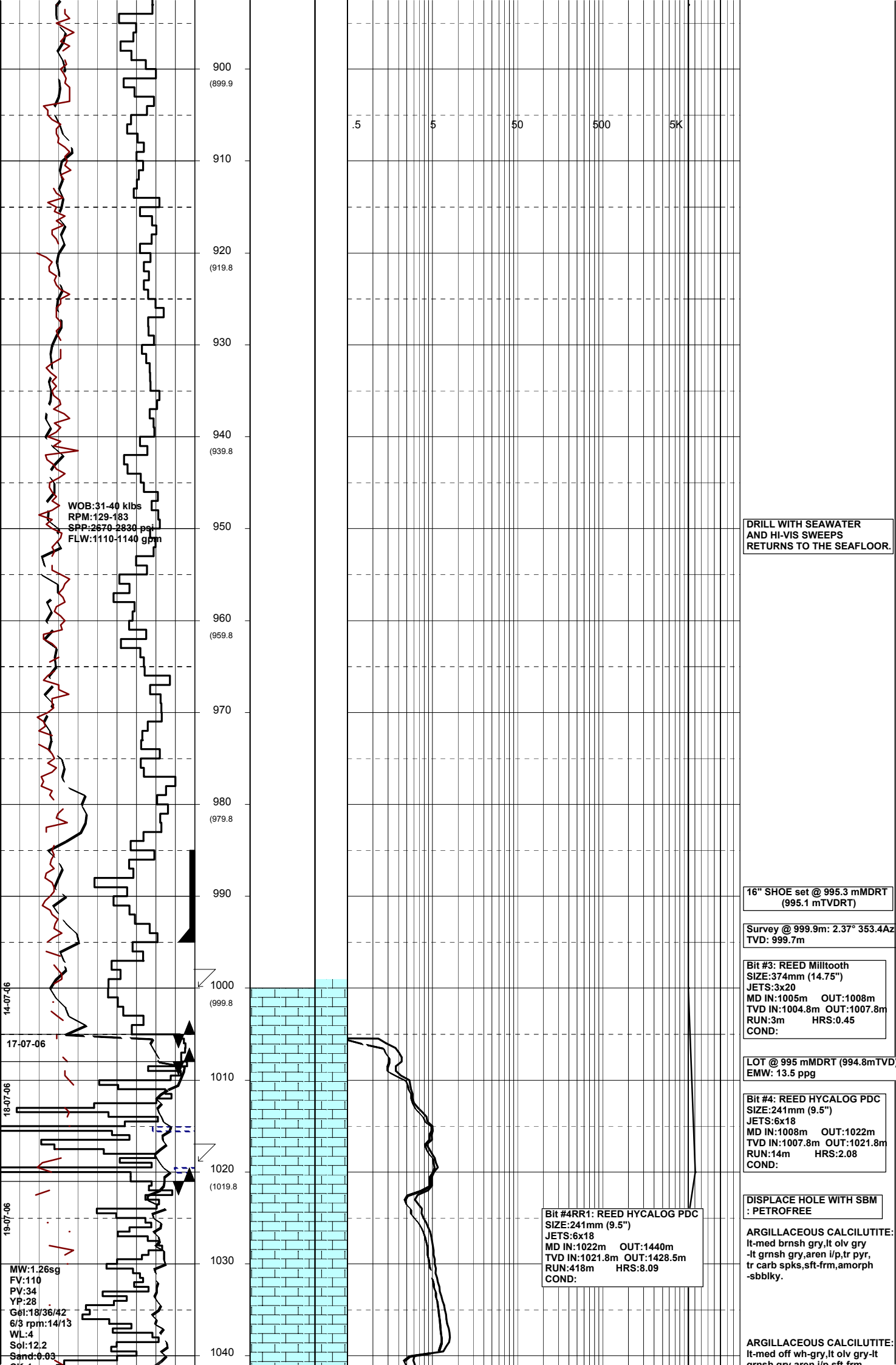
WOB:29-48 klbs
RPM:180-185
SPP:2600-2830 psi
FLW:1120 gpm

DRILL WITH SEAWATER AND HI-VIS SWEEPS RETURNS TO THE SEAFLOOR.

Survey @ 857.4m: 2.22° 356.6Az
TVD:857.3m

Survey @ 887.0m: 2.27° 356.6Az
TVD:886.9m





WOB:31-40 klbs
 RPM:129-183
 SPP:2670-2830 psi
 FLW:1110-1140 gpm

DRILL WITH SEAWATER
 AND HI-VIS SWEEPS
 RETURNS TO THE SEAFLOOR.

16" SHOE set @ 995.3 mMDRT
 (995.1 mTVDRT)

Survey @ 999.9m: 2.37° 353.4Az
 TVD: 999.7m

Bit #3: REED Milltooth
 SIZE:374mm (14.75")
 JETS:3x20
 MD IN:1005m OUT:1008m
 TVD IN:1004.8m OUT:1007.8m
 RUN:3m HRS:0.45
 COND:

LOT @ 995 mMDRT (994.8mTVD)
 EMM: 13.5 ppg

Bit #4: REED HYCALOG PDC
 SIZE:241mm (9.5")
 JETS:6x18
 MD IN:1008m OUT:1022m
 TVD IN:1007.8m OUT:1021.8m
 RUN:14m HRS:2.08
 COND:

DISPLACE HOLE WITH SBM
 : PETROFREE

ARGILLACEOUS CALCILUTITE:
 lt-med brnsh gry,lt olv gry
 -lt grnsh gry,aren i/p,tr pyr,
 tr carb spks,sft frm,amorph
 -sbbkly.

ARGILLACEOUS CALCILUTITE:
 lt-med off wh-gry,lt olv gry-lt
 grnsh any aren i/p sft frm

Bit #4RR1: REED HYCALOG PDC
 SIZE:241mm (9.5")
 JETS:6x18
 MD IN:1022m OUT:1440m
 TVD IN:1021.8m OUT:1428.5m
 RUN:418m HRS:8.09
 COND:

MW:1.26sg
 FV:110
 PV:34
 YP:28
 Gel:18/36/42
 6/3 rpm:14/13
 WL:4
 Sol:12.2
 Sand:0.03

14-07-06

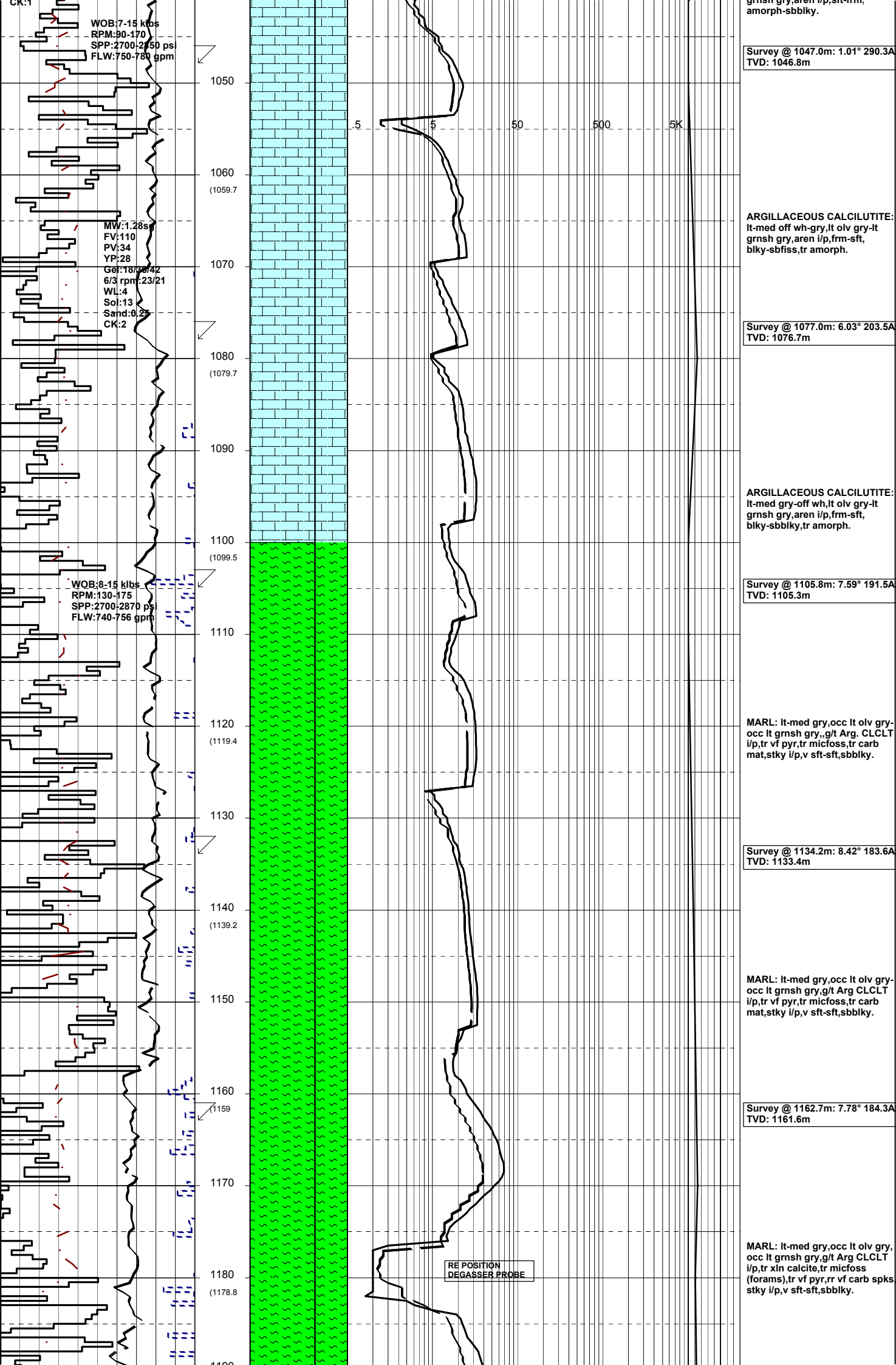
17-07-06

18-07-06

19-07-06

900 (899.9)
 910
 920 (919.8)
 930
 940 (939.8)
 950
 960 (959.8)
 970
 980 (979.8)
 990
 1000 (999.8)
 1010
 1020 (1019.8)
 1030
 1040

.5 5 50 500 5K



WOB:7-15 kbps
 RPM:90-170
 SPP:2700-2850 psi
 FLW:750-780 gpm

MW:1.285
 FV:110
 PV:34
 YP:28
 Gel:18/23/42
 6/3 rpm:23/21
 WL:4
 Sol:13
 Sand:0.25
 CK:2

WOB:8-15 kbps
 RPM:130-175
 SPP:2700-2870 psi
 FLW:740-756 gpm

Survey @ 1047.0m: 1.01° 290.3A
 TVD: 1046.8m

ARGILLACEOUS CALCILUTITE:
 lt-med off wh-gry,lt olv gry-lt
 grnsh gry,aren i/p,frm-sft,
 blk-ysbflky,tr amorph.

Survey @ 1077.0m: 6.03° 203.5A
 TVD: 1076.7m

ARGILLACEOUS CALCILUTITE:
 lt-med gry-off wh,lt olv gry-lt
 grnsh gry,aren i/p,frm-sft,
 blk-ysbflky,tr amorph.

Survey @ 1105.8m: 7.59° 191.5A
 TVD: 1105.3m

MARL: lt-med gry,occ lt olv gry-
 occ lt grnsh gry,,g/t Arg. CLCLT
 i/p,tr vf pyr,tr micfoss,tr carb
 mat,stk i/p,v sft-sft,sbflky.

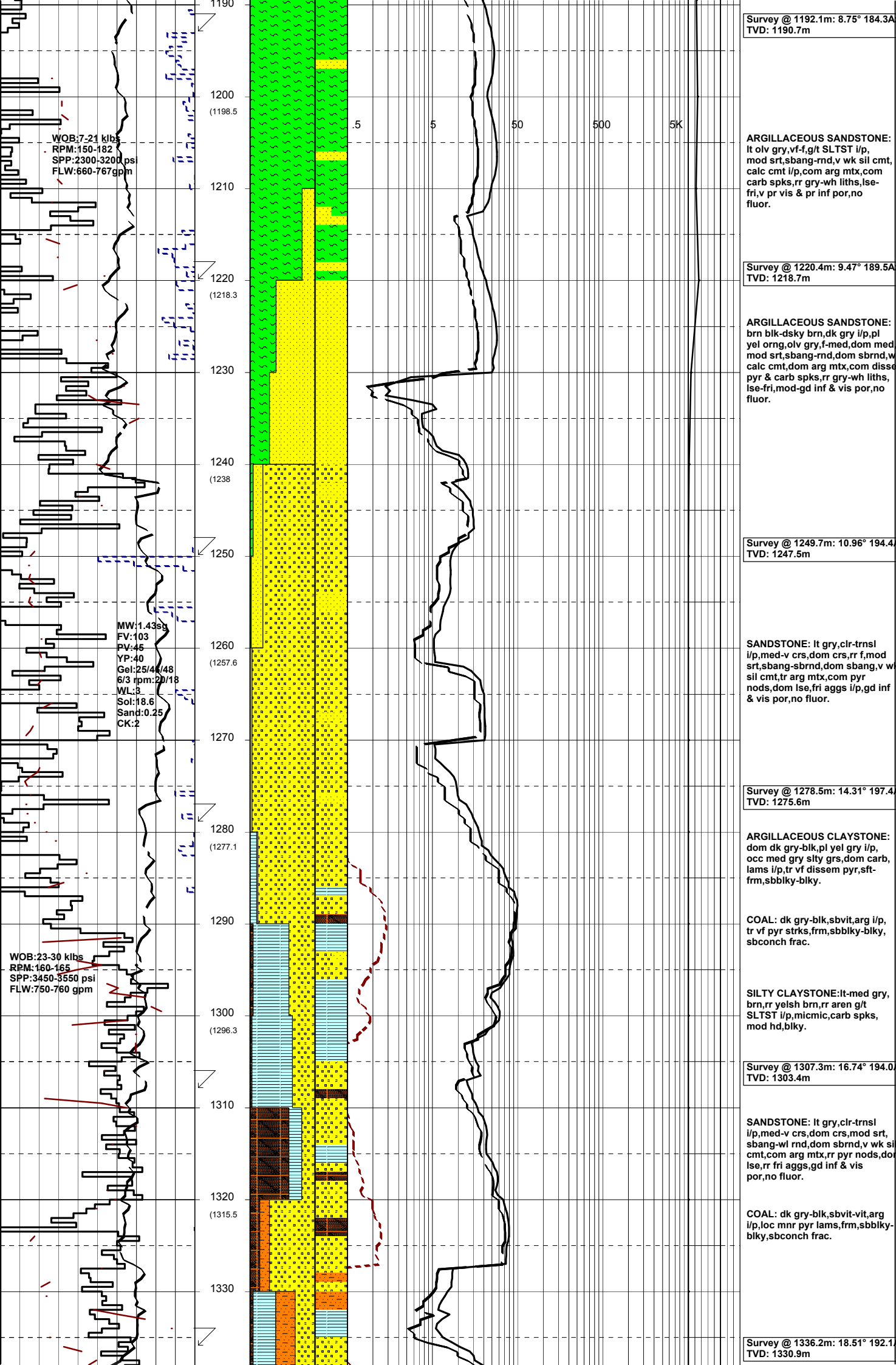
Survey @ 1134.2m: 8.42° 183.6A
 TVD: 1133.4m

MARL: lt-med gry,occ lt olv gry-
 occ lt grnsh gry,g/t Arg CLCLT
 i/p,tr vf pyr,tr micfoss,tr carb
 mat,stk i/p,v sft-sft,sbflky.

Survey @ 1162.7m: 7.78° 184.3A
 TVD: 1161.6m

MARL: lt-med gry,occ lt olv gry,
 occ lt grnsh gry,g/t Arg CLCLT
 i/p,tr xln calcite,tr micfoss
 (forams),tr vf pyr,rr vf carb spks
 stky i/p,v sft-sft,sbflky.

RE POSITION
 DEGASSER PROBE



Survey @ 1192.1m: 8.75° 184.3A
TVD: 1190.7m

ARGILLACEOUS SANDSTONE:
lt org gry,vf-f,g/t SLTST i/p,
mod srt,sbang-rnd,v wk sil cmt,
calc cmt i/p,com arg mtx,com
carb spks,rr gry-wh liths,lse-
fri,v pr vis & pr inf por,no
fluor.

Survey @ 1220.4m: 9.47° 189.5A
TVD: 1218.7m

ARGILLACEOUS SANDSTONE:
brn blk-dsky brn,dk gry i/p,pl
yel org,olv gry,f-med,dom med
mod srt,sbang-rnd,dom sbrnd,w
calc cmt,dom arg mtx,com disse
pyr & carb spks,rr gry-wh liths,
lse-fri,mod-gd inf & vis por,no
fluor.

Survey @ 1249.7m: 10.96° 194.4
TVD: 1247.5m

SANDSTONE: lt gry,clr-trnsl
i/p,med-v crs,dom crs,rr f,mod
srt,sbang-sbrnd,dom sbang,v wk
sil cmt,tr arg mtx,com pyr
nods,dom lse,fri aggs i/p,gd inf
& vis por,no fluor.

Survey @ 1278.5m: 14.31° 197.4
TVD: 1275.6m

ARGILLACEOUS CLAYSTONE:
dom dk gry-blk,pl yel gry i/p,
occ med gry stly grs,dom carb,
lams i/p,tr vf disse pyr,stf-
frm,sbbiky-blky.

COAL: dk gry-blk,svbit,arg i/p,
tr vf pyr strks,frm,sbbiky-blky,
sbconch frac.

SILTY CLAYSTONE:lt-med gry,
brn,rr yelsh brn,rr aren g/t
SLTST i/p,micmic,carb spks,
mod hd,blky.

Survey @ 1307.3m: 16.74° 194.0
TVD: 1303.4m

SANDSTONE: lt gry,clr-trnsl
i/p,med-v crs,dom crs,mod srt,
sbang-w rnd,dom sbrnd,v wk sil
cmt,com arg mtx,rr pyr nods,dot
lse,rr fri aggs,gd inf & vis
por,no fluor.

COAL: dk gry-blk,svbit-vit,arg
i/p,loc mnr pyr lams,frms,sbbiky-
blky,sbconch frac.

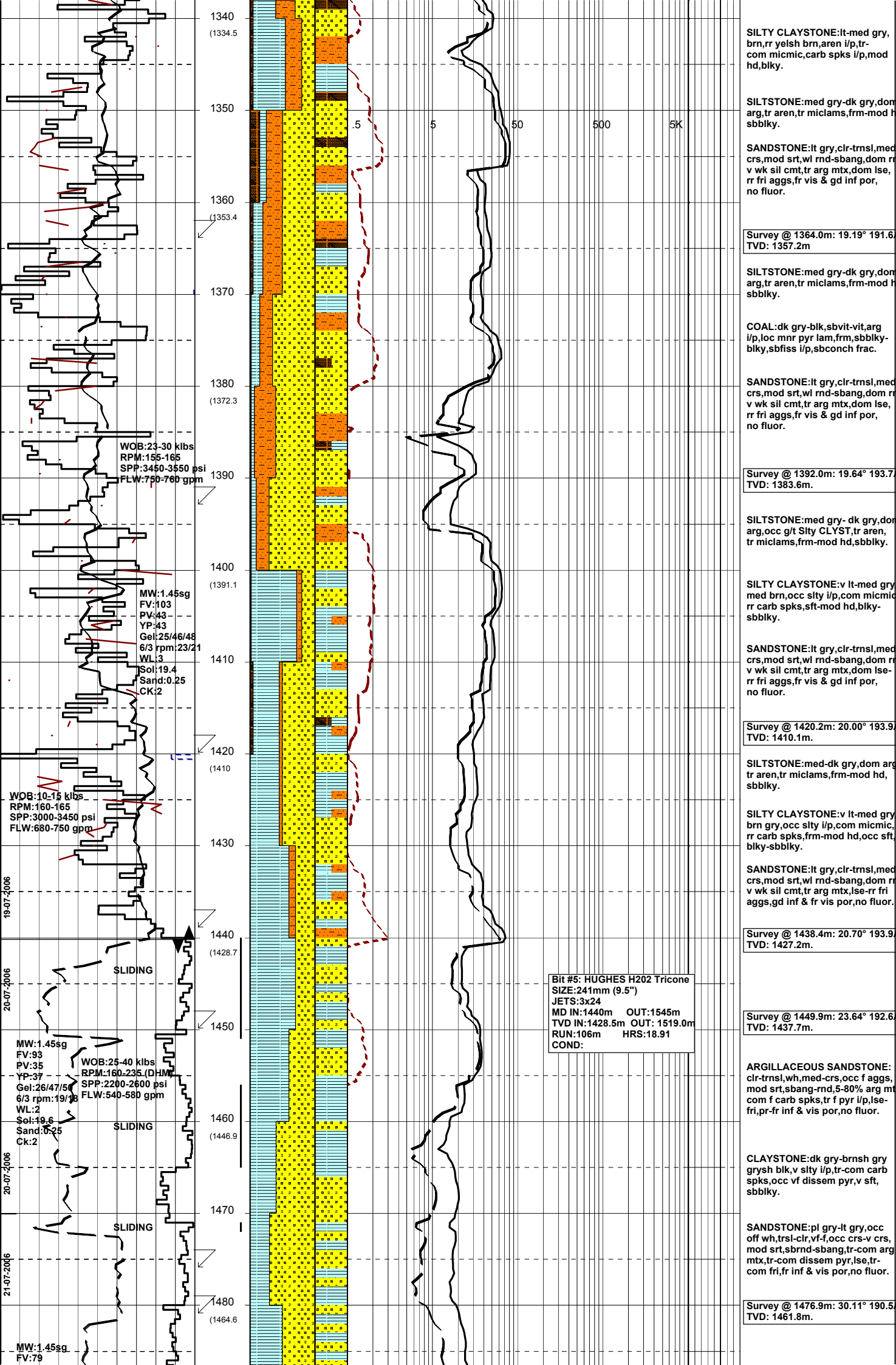
Survey @ 1336.2m: 18.51° 192.1
TVD: 1330.9m

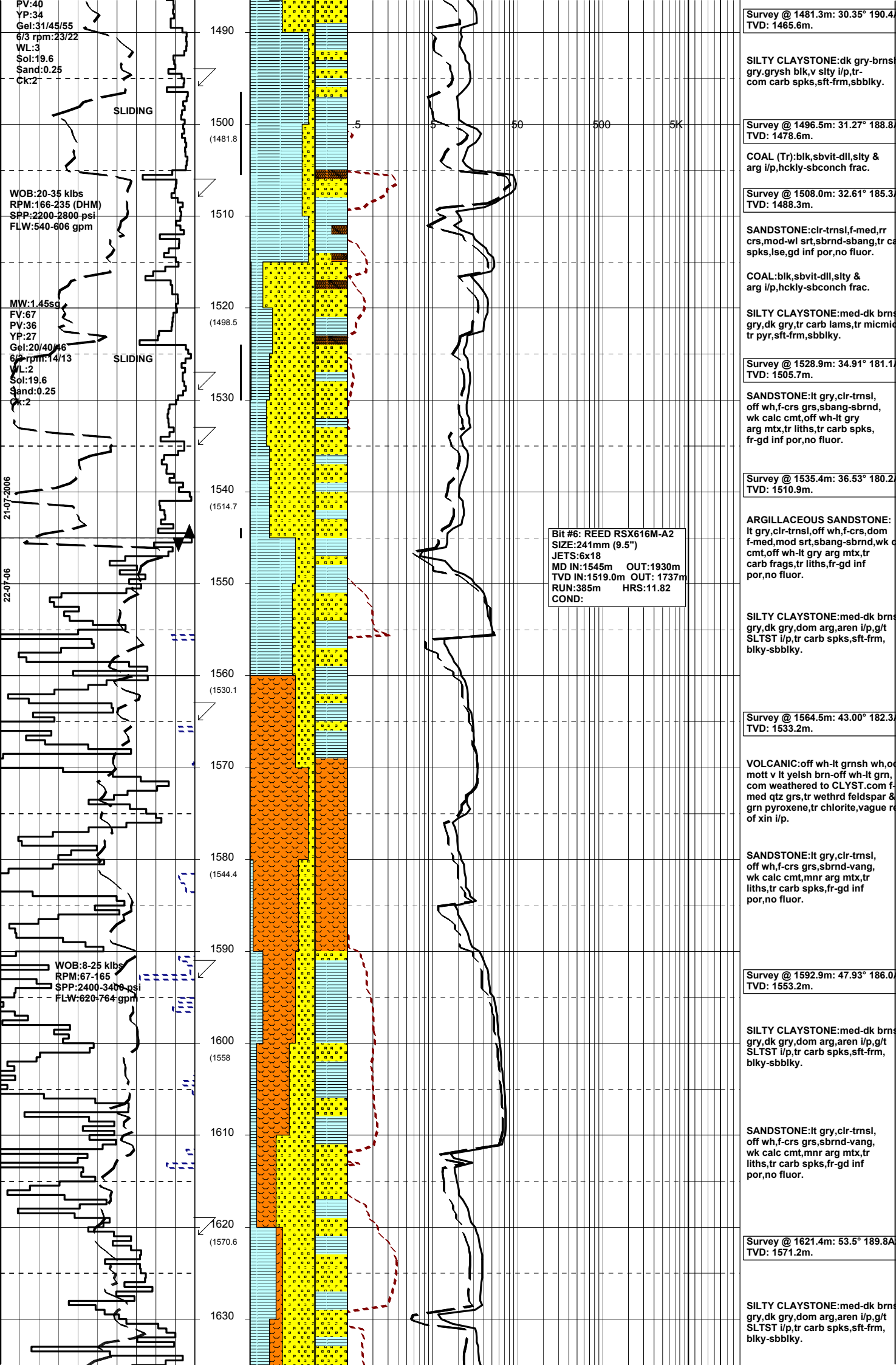
WOB:7-21 klbs
RPM:150-182
SPP:2300-3200 psi
FLW:660-767 gpm

MW:1.43ss
FV:103
PV:45
YP:40
Gel:25/44/48
6/3 rpm:20/18
WL:3
Sol:18.6
Sand:0.25
CK:2

WOB:23-30 klbs
RPM:160-165
SPP:3450-3550 psi
FLW:750-760 gpm

.5 5 50 500 5K





Survey @ 1481.3m: 30.35° 190.4°
 TVD: 1465.6m.

SILTY CLAYSTONE:dk gry-brns
 gry,grsh blk,v slty i/p, tr-
 com carb spks,sft-frm,sbbkly.

Survey @ 1496.5m: 31.27° 188.8°
 TVD: 1478.6m.

COAL (Tr):blk,svbit-dll,slty &
 arg i/p,hckly-sbconch frac.

Survey @ 1508.0m: 32.61° 185.3°
 TVD: 1488.3m.

SANDSTONE:clr-trnsl,f-med,rr
 crs,mod-wl srt,sbrnd-sbrng,tr ca
 spks,lse,gd inf por,no fluor.

COAL:blk,svbit-dll,slty &
 arg i/p,hckly-sbconch frac.

SILTY CLAYSTONE:med-dk brns
 gry,dk gry,tr carb lams,tr micm
 tr pyr,sft-frm,sbbkly.

Survey @ 1528.9m: 34.91° 181.1°
 TVD: 1505.7m.

SANDSTONE:lt gry,clr-trnsl,
 off wh,f-crs grs,sbrng-sbrnd,
 wk calc cmt,off wh-lt gry
 arg mtx,tr liths,tr carb spks,
 fr-gd inf por,no fluor.

Survey @ 1535.4m: 36.53° 180.2°
 TVD: 1510.9m.

ARGILLACEOUS SANDSTONE:
 lt gry,clr-trnsl,off wh,f-crs,dom
 f-med,mod srt,sbrng-sbrnd,wk
 cmt,off wh-lt gry arg mtx,tr
 carb frags,tr liths,fr-gd inf
 por,no fluor.

SILTY CLAYSTONE:med-dk brns
 gry,dk gry,dom arg,aren i/p,g/t
 SLTST i/p,tr carb spks,sft-frm,
 blk-sbbkly.

Survey @ 1564.5m: 43.00° 182.3°
 TVD: 1533.2m.

VOLCANIC:off wh-lt grnsh wh,of
 mott v lt yelsh brn-off wh-lt grn,
 com weathered to CLYST.com f-
 med qtz grs,tr wethrd feldspar &
 grn pyroxene,tr chlorite,vague r
 of xin i/p.

SANDSTONE:lt gry,clr-trnsl,
 off wh,f-crs grs,sbrnd-vang,
 wk calc cmt,mnr arg mtx,tr
 liths,tr carb spks,fr-gd inf
 por,no fluor.

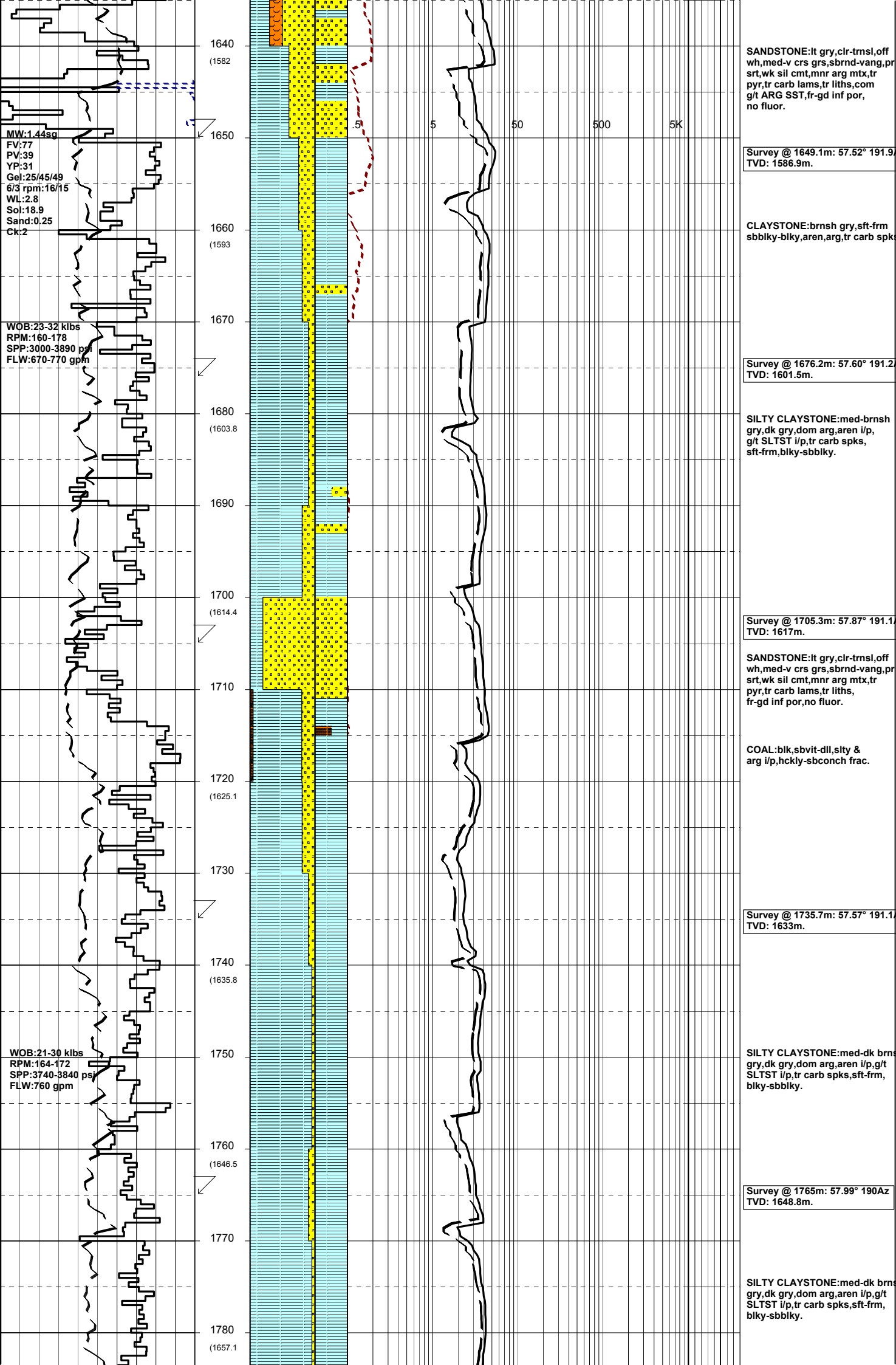
Survey @ 1592.9m: 47.93° 186.0°
 TVD: 1553.2m.

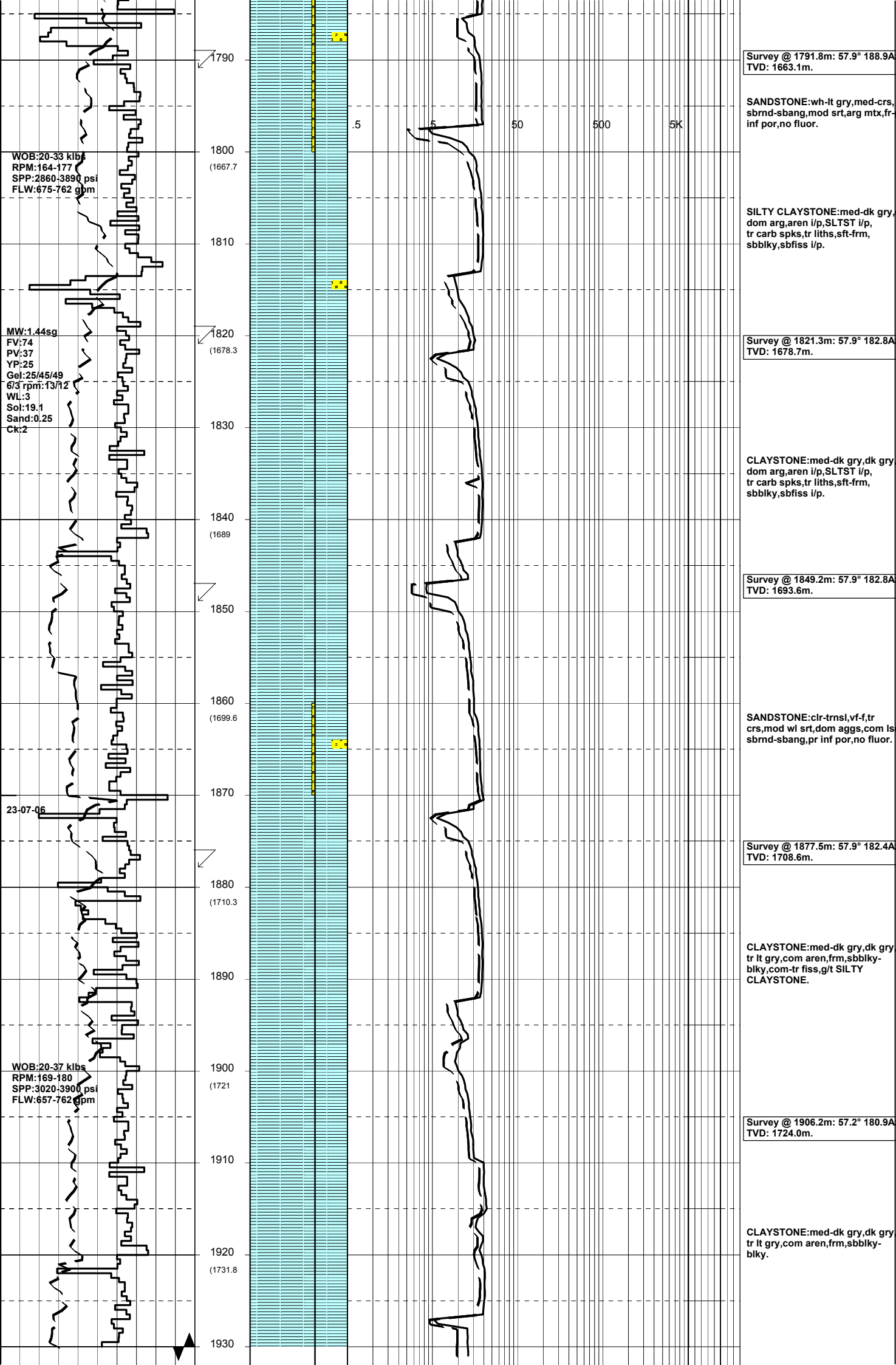
SILTY CLAYSTONE:med-dk brns
 gry,dk gry,dom arg,aren i/p,g/t
 SLTST i/p,tr carb spks,sft-frm,
 blk-sbbkly.

SANDSTONE:lt gry,clr-trnsl,
 off wh,f-crs grs,sbrnd-vang,
 wk calc cmt,mnr arg mtx,tr
 liths,tr carb spks,fr-gd inf
 por,no fluor.

Survey @ 1621.4m: 53.5° 189.8A°
 TVD: 1571.2m.

SILTY CLAYSTONE:med-dk brns
 gry,dk gry,dom arg,aren i/p,g/t
 SLTST i/p,tr carb spks,sft-frm,
 blk-sbbkly.





Survey @ 1791.8m: 57.9° 188.9A
TVD: 1663.1m.

SANDSTONE:wh-lt gry,med-crs,
sbrnd-sbang,mod srt,arg mtx,fr-
inf por,no fluor.

SILTY CLAYSTONE:med-dk gry,
dom arg,aren i/p,SLTST i/p,
tr carb spks,tr liths,sft-frm,
sbbiky,sbfiss i/p.

Survey @ 1821.3m: 57.9° 182.8A
TVD: 1678.7m.

CLAYSTONE:med-dk gry,dk gry
dom arg,aren i/p,SLTST i/p,
tr carb spks,tr liths,sft-frm,
sbbiky,sbfiss i/p.

Survey @ 1849.2m: 57.9° 182.8A
TVD: 1693.6m.

SANDSTONE:clr-trnsl,vf-f,tr
crs,mod wl srt,dom aggs,com ls
sbrnd-sbang,pr inf por,no fluor.

Survey @ 1877.5m: 57.9° 182.4A
TVD: 1708.6m.

CLAYSTONE:med-dk gry,dk gry
lt gry,com aren,frm,sbbiky-
biky,com-tr fiss,g/t SILTY
CLAYSTONE.

Survey @ 1906.2m: 57.2° 180.9A
TVD: 1724.0m.

CLAYSTONE:med-dk gry,dk gry
tr lt gry,com aren,frm,sbbiky-
biky.

WOB:20-33 klbs
RPM:164-177
SPP:2860-3890 psi
FLW:675-762 gpm

MW:1.44sg
FV:74
PV:37
YP:25
Gel:25/45/49
6/3 rpm:13/12
WL:3
Sol:19.1
Sand:0.25
Ck:2

23-07-06

WOB:20-37 klbs
RPM:169-180
SPP:3020-3900 psi
FLW:657-762 gpm

1790
1800 (1667.7)
1810
1820 (1678.3)
1830
1840 (1689)
1850
1860 (1699.6)
1870
1880 (1710.3)
1890
1900 (1721)
1910
1920 (1731.8)
1930

.5 5 50 500 5K

